



Location

Stratford, London

Client

Emcor Rail Ltd, YJLI
& M J Lonsdale Ltd

Project at a glance

Form 2 Control Panels

Andover TAC Continuum
Supervisor

2 CX Continuum Controllers
Main Plant

40+ Andover TAC Infinet
Controllers on Fan Coil Units

Controls Electrical Installation

Stratford International Station, is part of CTRL [Channel Tunnel Rail Link] HS 1 connecting Eurostar trains from Folkstone to St Pancras International, and will be the hub of the Olympic 2012 transport system. The station also incorporates two platforms for Southeastern HS service to the Medway towns of Kent.

Heating & Cooling

The heating and cooling of the station is achieved by an optimised LTHW gas boiler plant and a packaged chiller.

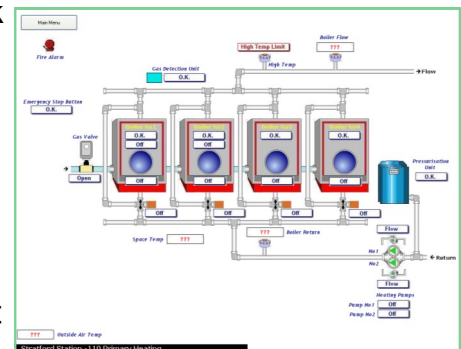
There are 4 modular gas boilers, 2 of which are condensing, provide the primary LTHW heating system for air handling plant and fan coil units . Two secondary variable temperature compensated circuits, one for underfloor heating in the departure area and one for common areas of the station with conventional radiators.

Ventilation

Ventilation in to public areas and offices, is provided by 3 air handling units feeding the check-in area, departure lounge and arrival/ passport control area. 1 air handling unit supplies primary air to office fan coil units.

Fan Coil Units

Throughout the staff and administration office fan coil unit provide locally controlled conditions.



234 Europa Boulevard
Gemini Business Park
Warrington
Cheshire
WA5 7TN

Tel : 01925 419 416
Fax : 01925 419 417

buildingtechnologysystems.co.uk : [About Us](#) - [Contact Us](#) - [Find Us](#) - [Mission Statement](#)



DIRECTORS
D. A. Brookes • G. P. Spark • P. Blower
Company registered in England No. 3211394

